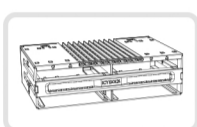


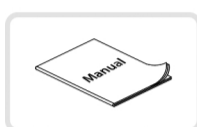
Copyright © ICY DOCK International. All Rights Reserved. 650294 VER 1.0

1

Package Contents • Packungsinhalt • Contenu • Contenido del paquete • 包装について • 包装説明 • 包装说明



Device



User Manual



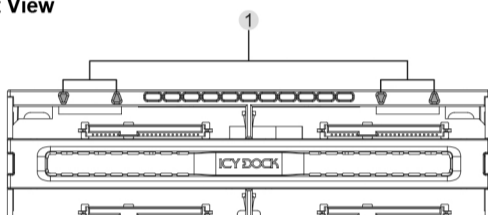
4 x M3*2.5 Screws for Device
(2 x Screws for Spare Parts)

ⓘ Note: Please use the included screws to secure the device.

2

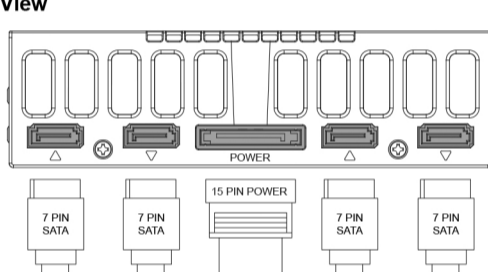
Device Information • Geräteinformationen • Informations dispositif • Información del dispositivo • 本体説明 • 機體説明 • 机体说明

▼ Front View



① LED Indicator (Device Power: Solid Blue; Drive Access: Flashing Blue)

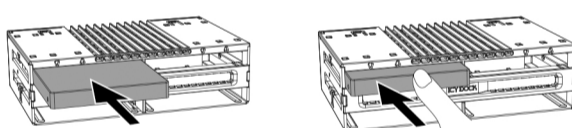
▼ Rear View



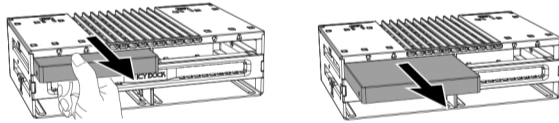
3

Installation Guide • Installationsanleitung • Guide d'Installation • Guía de instalación • 製品の組み込み手順について • 操作步驟 • 操作步驟

1. Installing 2.5" Drives - Insert the drive all the way into the slot.

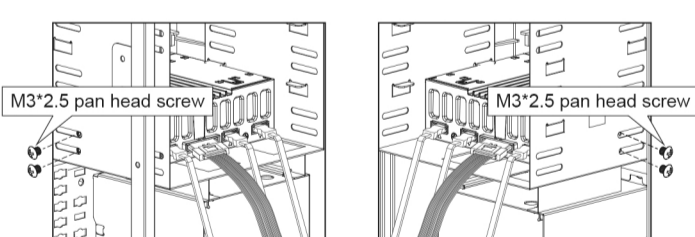


2. Removing 2.5" Drives - Pull out the drive by holding it on its edges as image shown below.



4

Device Installation • Installation eines Gerätes • Installation du dispositif • Instalación del dispositivo de • デバイス取付手順 • 装置安裝步驟 • 裝置安裝步驟



For best stability and smooth drive insertion and removal, please install two screws on each side of the case as image shown above.

ICY DOCK®

www.icydock.com



For the warranty information, please visit www.icydock.com/warranty.php