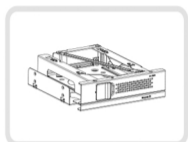


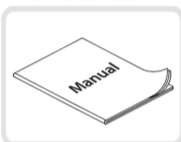
Copyright © ICY DOCK International. All Rights Reserved. 650289 VER 1.0

**1**

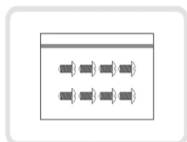
**Package Contents** • Packungsinhalt • Contenu • Contenido del paquete • 包装について • 包装説明 • 包装说明



Device



Quick Installation Guide

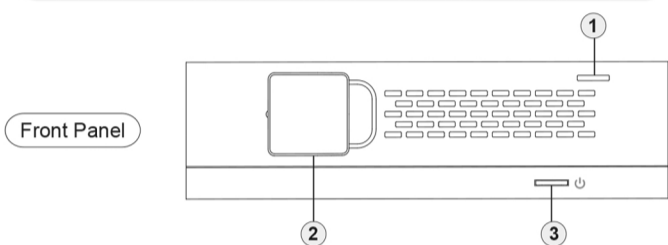


M3\*6 Screw x 8 for Device

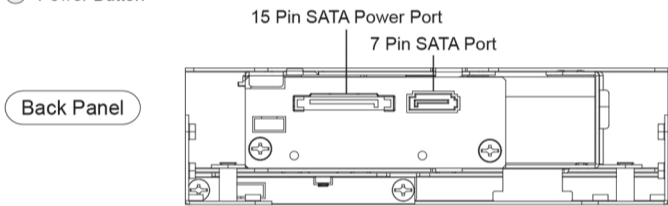
**Note:** Please use the included screws to secure the device

**2**

**Device Information** • Geräteinformationen • Informations dispositif • Información del dispositivo • 本体説明 • 機體説明 • 机体说明



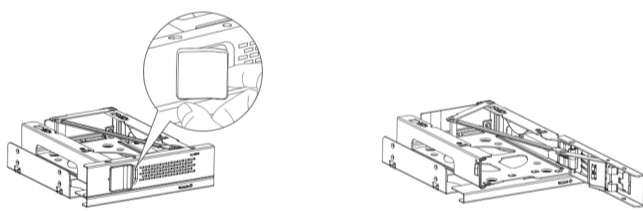
- ① LED Indication - LED illuminates blue after the hard drive is inserted into the drive bay (power button must be engaged) and will flash blue during drive access. The LED will remain off if the drive bay is empty
- ② Front Door Latch
- ③ Power Button



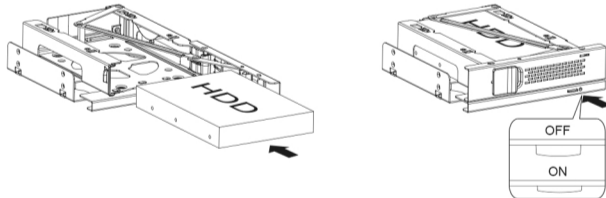
**3**

**Installation Guide** • Installationsanleitung • Guide d'Installation • Guía de instalación • 製品の組み込み手順について • 操作步驟 • 操作步驟

1. Pull the front door latch and pull out the front door



2. Make sure the hard drive connector is in correct position and insert the hard drive. Close the front door and press the power button to turn on the device



3. Please use included M3\*6 screws to mount the device into a 5.25" device bay. Connect the SATA 7 pin and 15pin power connector to the device to complete installation.

