

Scan the QR code for more product information



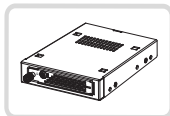
Cremax Europe GmbH  
Weidenweg 21H  
47059 Duisburg, Germany  
Email: support@icydock.com



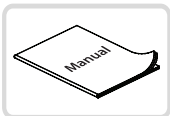
Copyright © ICY DOCK International. All Rights Reserved. 6502161 VER 2.0

**1**

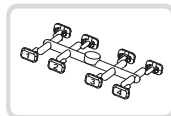
**Package Contents** • Packungsinhalt • Contenu • Contenido del paquete • 包装について • 包装説明 • 包装说明



Device



User Manual



Drive ID Plug



2 x Key



4 x M3\*4 Pan Head Screw for Device



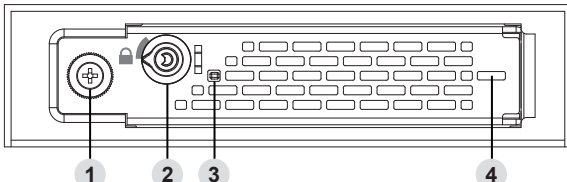
4 x M3\*4 Flat Head Screw for 2.5" HDD/SSD

Note : Please use the included screws to secure the drive(s)

**2**

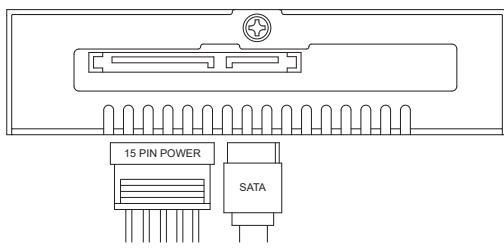
**Device Information** • Geräteinformationen • Informations dispositif • Información del dispositivo • 本体説明 • 機體説明 • 机体说明

▼ **Front View**



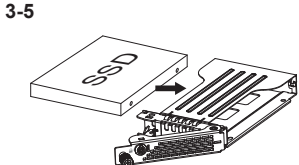
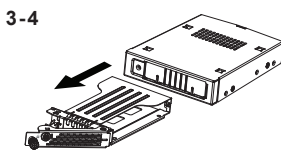
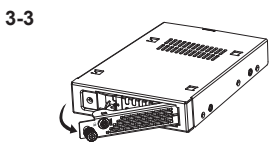
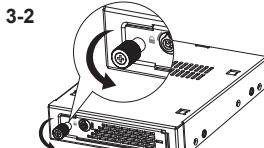
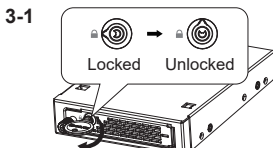
- 1. Thumbscrew
- 2. EZ-Lock
- 3. LED Indicator (Device Power : Solid Green ; Drive Access : Flashing Amber)
- 4. Slot for Drive ID Plug

▼ **Rear View**

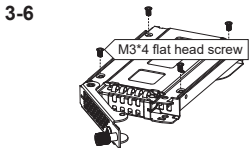


**3**

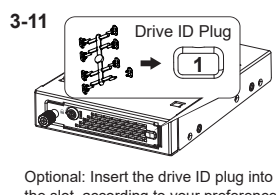
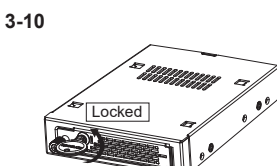
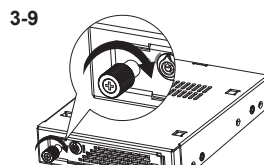
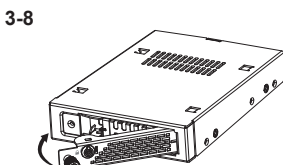
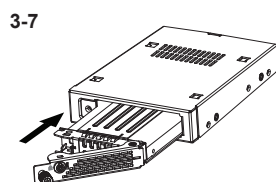
**Installation Guide** • Installationsanleitung • Guide d'Installation • Guía de instalación • 製品の組み込み手順について • 操作步驟 • 操作步驟



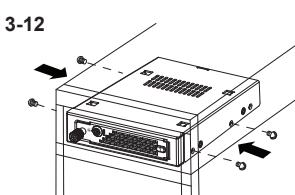
This device accommodates drives with up to 15 mm height. Please follow the arrow direction when insert the HDD or SSD to the tray.



Please use the included M3\*4 flat head screws only.



Optional: Insert the drive ID plug into the slot, according to your preference.



Please use included M3\*4 screws to secure the device onto the 3.5" floppy bay.

